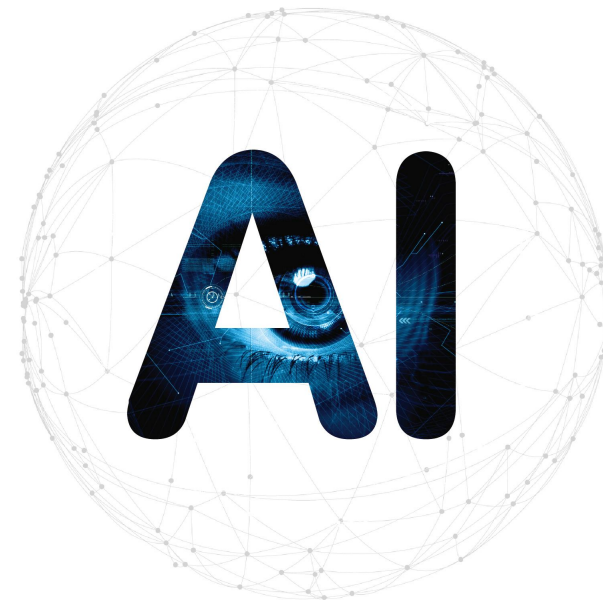


## 遇见AI, 外观缺陷检测定制解决方案 Customized Solution for Appearance Defect Detection



### 安徽省科亿信息科技有限公司

地址:安徽省合肥市桃花工业园汤口路168号

网址:<http://www.keyetech.com>

销售热线:191 4244 2827 market-axq@keyetech.com

137 0569 3311 wm@keyetech.com

售后服务:0551-65553919 邮箱:prtm.yzf@keyetech.com

### Anhui Key Information Technology Co., Ltd.

Add:168 Tangkou Road, Taohua Industrial Park, Hefei Anhui

Web:[www.visual-inspectionssystem.com](http://www.visual-inspectionssystem.com)

Sales Hotline:+86 191 4244 2827 market-axq@keyetech.com

+86 137 0569 3311 wm@keyetech.com

After-sale Service Tel:+86 551-65553919 Mail:prtm.yzf@keyetech.com

\*因公司产品技术不断革新,本画册所列示的产品若涉及外观或性能等升级的,以实际升级后的产品性能为准。

Due to continuous innovation of our product technologies and in case of any upgrading of appearance or performance if the products listed in the catalogue, the actual upgraded product performances shall prevail.

2022年9月



**AI视觉检测设备**  
AI Visual Inspection Equipment

## 公司简介 Company Profile

安徽省科亿信息科技有限公司 (以下简称:科亿科技) 成立于2011年,是一家专注于将 AI 技术应用于工业领域的国家级高新技术企业,为各细分行业提供视觉成像、算法算力及自动控制的AI系统解决方案。

科亿科技依托于中国科学技术大学模式识别重点实验室,拥有一支高水平博士研发团队,涵盖光、机、电、算、软全技术链,通过在包装容器、3C、新能源、医药、纺织、食品等领域的项目实践,打造了KVS-AI软硬件平台,让AI技术切实转换成真正的生产力。

合作伙伴  
Partners **1000+**

知识产权  
Intellectual  
property rights **30+**

科研团队  
Scientific  
research teams **40+**

企业荣誉  
Corporate  
honors **10+**

Anhui Key Information Technology Co., Ltd. (hereinafter referred to as Key Technology) was established in 2011. It is a national high-tech enterprise focusing on applying AI technology to the industrial field. Provide visual imaging, algorithm computing power and automatic control AI system solutions for various sub-industries.

Key Technology relies on the Key Laboratory of Pattern Recognition of the University of Science and Technology of China, and has a high-level doctoral R&D team covering the entire technology chain of optics, mechanics, electricity, computing and software. Through the project practice in the fields of packaging containers, 3C, medicine, textile, food, etc., the KVS-AI software and hardware platform has been created, so that AI technology can be transformed into real productivity.





# 科亿科技AI图像视觉检测定制解决方案

Key Tech AI image visual inspection customized solutions

灌装类饮品检测 (瓶体、空盖、合盖、液位、杂质、标签)  
Filling beverage detection (bottle body, empty cover, closed cover, liquid level, impurities, labels)



瓶盖检测 Bottle cap inspection



瓶体检测 Bottle inspection



瓶胚检测 PET preform inspection



杯装检测 Cup inspection



医药包装检测 Pharmaceutical packaging inspection



喷码检测 (缺失、模糊、未喷码) Code detection (missing, fuzzy, uncoded)



其他行业检测: 纺织、工业互联网、薄膜、纸质包装等  
Other industry testing: textile, industrial Internet, film, paper packaging



.....

# 遇见AI 告别困扰

AI, solve your problems

# AI

## KEYETECH

### AI深度学习, 精准定位差异

AI deep learning, accurate positioning of differences

基于深度学习的AI算法, 突破传统检测技术难点, 采集产品缺陷样本, 自主学习训练, 多维度辨识样品间的细小差异。通过采集少量样本训练完善算法网络模型, 使其具有“类脑”智能, 达到所见即所得的效果。

The AI algorithm based on deep learning breaks through the difficulties of traditional detection technology, collects product defect samples, self-learning and training, and multi-dimensionally identifies small differences between samples. By collecting a small number of samples to train and improve the algorithm network model, it has "brain-like" intelligence and achieves the effect of what you see is what you get.

### 智能“芯”, 洞悉真相

Intelligence GPU, discover the truth

定制化LED光源、工业相机, 搭载智“芯”处理平台, 还原产品真实本色, 产品缺陷一目了然。融合光、机、电、算、软, 架构出集成度更高、运算更快、处理能力更强的AI平台。

Customized LED light source, industrial camera, equipped with intelligent "core" processing platform, restore the true nature of the product, and product defects are clear at a glance. Integrate optical, mechanical, electrical, computing, and software to build an AI platform with higher integration, faster computing, and stronger processing capabilities.

### 赋能行业, 智慧升级

Empower the industries, intelligence upgrade

特有的数据增强功能, 少量样本模拟海量数据, 构建自有AI数据库, 适应客户产品升级需求, 赋能企业数字化转型升级, 提质增效。

The unique data enhancement function, a small number of samples simulates massive data, builds its own AI database, adapts to customer product upgrade needs, empowers enterprises to digitally transform and upgrade, and improves quality and efficiency.





智能管家 一键“智”管

Smart housekeeper



用户管理  
User management

故障预测  
Failure prediction

状态监控  
Status monitoring

数据分析  
Data analysis

设备管理  
Device management

发现问题  
Find the problem line

数据采集  
Data collection

数据共享  
Data sharing

生产统计  
Production statistics

运维调试  
Debugging

权限管理  
Authority management

针对性的  
维护设备  
Targeted maintenance equipment

利用科亿科技中控管理平台,实现企业内部各产线互联互通,各工位生产动态实时采集和状态的实时监控,及时发现企业各生产线问题,并及时对设备进行维护和实施解决方案。

Use the central control management platform of Keyi Technology to realize the interconnection of various production lines within the enterprise, real-time collection of production dynamics at each station and real-time monitoring of status, timely discovery of problems in each production line of the enterprise, and timely maintenance of equipment and implementation of solutions.



AI Visual Inspection Equipment  
AI视觉检测设备

 创新驱动 缺陷检测全能专家  
All-round expert in defect detection



## 灌装线缺陷检测解决方案 Filling Line Defect Detection Solutions

灌装线缺陷检测由理料系统、视觉系统、软件系统、中央控制系统、执行系统组成。检测物通过理料系统,对其进行整理,确保检测物朝向一致,分布均匀,进入视觉系统,对检测物进行360°全方位拍摄图像,并将图像数据传到软件系统,将检测物进行识别分类,向执行系统下达剔除、分类指令。

Filling line defect detection consists of material handling system, vision system, software system, central control system and execution system. The detected objects are sorted through the material sorting system to ensure that the detected objects are oriented in the same direction and evenly distributed, and then enter the vision system to take 360° images of the detected objects, and transmit the image data to the software system to identify the detected objects. Sorting, issuing rejection and sorting instructions to the execution system.





## 灌装线检测流程

### Filling line inspection process

#### 8. 装箱后外观及纸箱贴标喷码检测

##### Appearance and carton labeling and coding detection after packing

- 标识 Logo
- 纸箱外观变形、封口胶歪斜、飞翅、短缺  
The appearance of the carton is deformed, the sealing glue is skewed, and the shortage
- 纸箱贴标 Carton labeling
- 纸箱油墨喷码等 Carton ink jet coding, etc.

#### 7. 装盒后外观及礼盒喷码检测

##### Appearance and gift box coding inspection

- 礼盒外观检测  
Gift box appearance inspection
- 礼盒激光喷码 (日期、生产批次), 包含喷码有无、变形、歪斜等  
Gift box laser coding (date, production batch), including the presence or absence of coding, deformation, skew, etc.

#### 6. 空盒外观及贴标检测

##### Empty box appearance and labeling inspection

- 礼盒表面破损、变形、划痕、长度  
The surface of the gift box is damaged, deformed, scratched, and the length
- 空盒贴防伪标等  
Empty boxes with anti-counterfeiting labels, etc.

#### 5. 瓶体贴标喷码检测 Bottle labeling and coding detection

- 防伪标有无 With or without anti-counterfeiting labels
- 喷码有无 With or without coding
- 皱标, 标签长宽变化 Wrinkled label, label length and width change
- 歪标, 标签两侧高差等 Crooked label, height difference on both sides of label, etc.

#### 1. 空瓶检测 Empty bottle detection

- 瓶口、瓶颈、瓶身、瓶底破损及裂纹, 缺陷面积  
Bottle mouth, neck, bottle body, bottle bottom damage and cracks, defect area
- 瓶口内外径尺寸和椭圆度, 直径差  
The inner and outer diameter of the bottle mouth and the ovality, the diameter difference
- 高低瓶, 高度差等  
High and low bottles, height difference, etc.

#### 2. 瓶盖及瓶盖内件检测 Bottle caps and bottle cap internals inspection

- 瓶盖内件有无、变形和破损  
The presence, deformation and damage of the inner parts of the bottle cap

#### 3. 液位及封盖检测 Liquid level and cap detection

- 可设置标准液位, 检测出偏差  
Standard liquid level can be set to detect deviation
- 未盖瓶盖、瓶盖歪斜  
No cap, crooked cap
- 划痕、脏污、厚薄、孔洞等  
Scratches, dirt, thickness, holes, etc.

#### 4. 杂质检测 Impurity detection

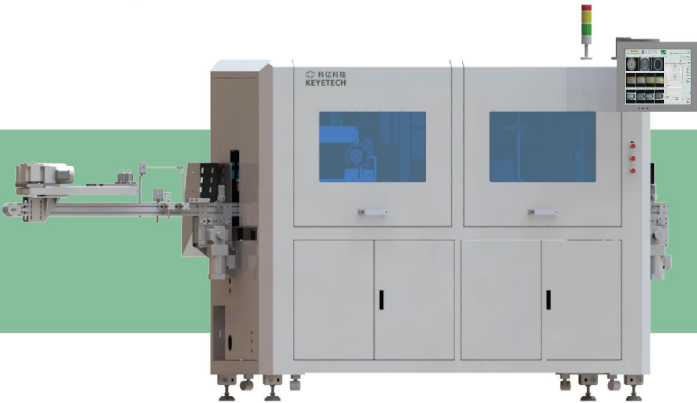
- 蚊、蝇等生物及其躯干  
Small creatures such as mosquitoes and flies
- 毛发、有色丝状物沉淀  
Precipitation of hair, colored filaments
- 悬浮物、黑色、白色、有色杂质等  
Suspended solids, black, white, colored impurities, etc.



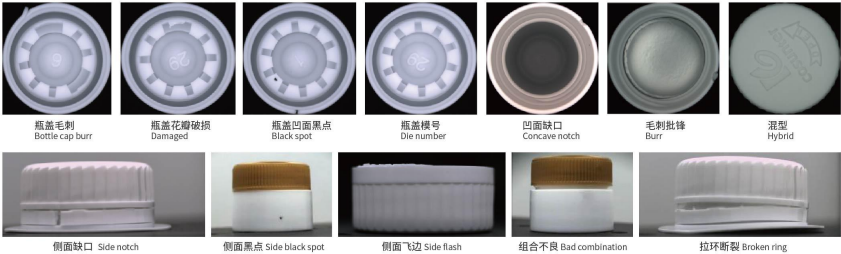
全自动瓶盖检测机  
Automatic Closure Inspection Machine



全自动瓶体检测机  
Automatic Bottle Inspection Machine



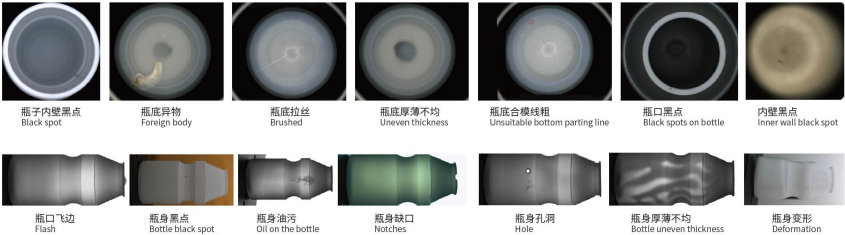
检测缺陷 Sample:



技术参数 Technical parameters:

检测标准 Inspect	黑点、色差、杂质、螺纹、压环、缺口、批锋、毛刺、变形、尺寸、垫片、内塞、模号等 Black spot, color difference, impurity, thread, pressing ring, broken ring, notch, batch edge, burr, flash, deformation, dimension, gasket, inner plug, die number, etc.		
检测区域 Detection area	瓶盖凹面、顶面、侧面 Bottle cap concave,top,side		
电压电流 Voltage and current	适配客户国家标准 Adapt to national standard		
压缩空气 Compressed air	0.5Mpa-0.8Mpa		
检测速度 Speed	2500个/分钟 2500pcs/min	功率 Power	5000-7000w
检测精度 Precision	0.1mm	准确率 Accuracy	99.9%
设备尺寸(包含理盖机) Size	3700*1300*1785mm	重量 Weight	350kg

检测缺陷 Sample:



技术参数 Technical parameters:

检测标准 Inspect	黑点、色差、杂质、螺纹、吊环、缺口、余料、飞边、气泡、孔洞、厚薄不均、变形、尺寸、喷码、商标、模号等 Black, spots, color difference, impurities, threads, rings, notches, leftovers,flash, bubbles, holes, uneven thickness, deformation, size, inkjet, trademark, die number, etc.		
检测区域 Detection area	瓶口、瓶口内壁、瓶底、瓶身 Bottle mouth,bottle bottom,bottle body		
电压电流 Voltage and current	适配客户国家标准 Adapt to national standard		
压缩空气 Compressed air	0.5Mpa-0.8Mpa		
检测速度 Speed	300个/分钟 300pcs/min	功率 Power	5000-7000w
检测精度 Precision	0.1mm	准确率 Accuracy	99.9%
设备尺寸 Size	3550*1030*1800mm	重量 Weight	350kg



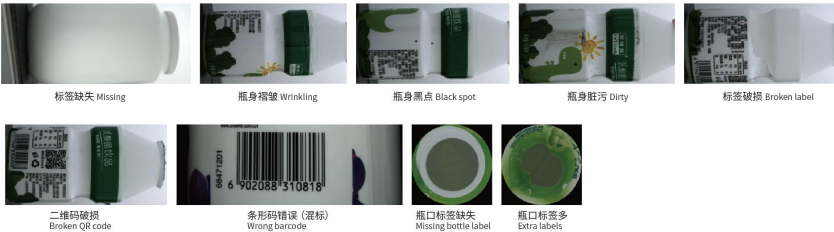
全自动标签检测机  
Automatic Label Inspection Machine



全自动瓶胚检测机  
Automatic Preform Inspection Machine



检测缺陷 Sample:



技术参数 Technical parameters:

检测标准 Inspect	套标、贴标、模内贴标 Trapping label, labeling, in-mold labeling		
检测区域 Detection area	瓶身各种标签 Various labels on the bottle		
电压电流 Voltage and current	适配客户国家标准 Adapt to national standard		
压缩空气 Compressed air	0.5Mpa-0.8Mpa		
检测速度 Speed	300个/分钟 300pcs/min	功率 Power	3000-5000w
检测精度 Precision	0.1mm	准确率 Accuracy	99.9%
设备尺寸(包含理盖机) Size	4550*1030*1800mm	重量 Weight	350kg

检测缺陷 Sample:



技术参数 Technical parameters:

检测标准 Inspect	黑点、杂质、缺口、飞边、裂纹、划痕、流纹、孔洞、气泡、变形等 Specks, color, foreign item,acrew thread, hole, crack, scratch, burr, flash, deformation,etc.		
检测区域 Detection area	胚口、支撑环、胚身、胚底 Embryos, Support rings, Embryos, Embryos		
电压电流 Voltage and current	适配客户国家标准 Adapt to national standard		
压缩空气 Compressed air	0.5Mpa-0.8Mpa		
检测速度 Speed	300个/分钟 300pcs/min	功率 Power	3000-6000w
检测精度 Precision	0.1mm	准确率 Accuracy	99.9%
设备尺寸 Size	1955*720*1877mm	重量 Weight	260kg

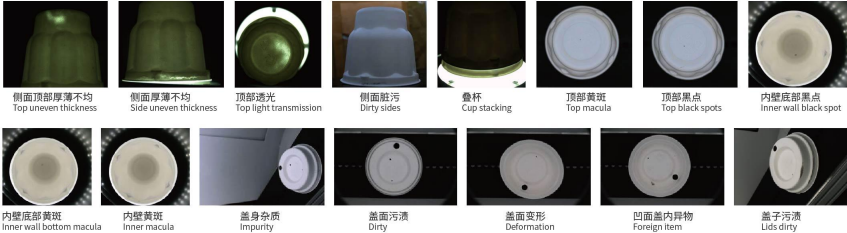
全自动纸塑产品检测机  
Automatic Paper Plastic Products Detector



全自动模内贴检测机  
Full Automatic Die Sticking Detection Machine



检测缺陷 Sample:



技术参数 Technical parameters:

检测标准 Inspect	黑点、杂质、缺口、飞边、裂纹、孔洞、变形等 Specks, impurity, notches, burr, crack, hole, deformation, etc.		
检测区域 Detection area	杯口、杯内壁、杯外底、纸塑盖凹面、纸塑盖四周、纸塑盖顶面 Cup mouth, inner wall of cup, outer bottom of cup, concave surface of paper plastic cover, all around of paper plastic cover, top surface of paper plastic cover		
电压电流 Voltage and current	适配客户国家标准 Adapt to national standard		
压缩空气 Compressed air	0.5Mpa-0.8Mpa		
检测速度 Speed	300个/分钟 300pcs/min	功率 Power	3000-6000w
检测精度 Precision	0.1mm	准确率 Accuracy	99.9%
设备尺寸(包含理盖机) Size	2058*1710*1567mm	重量 Weight	350kg

检测缺陷 Sample:



技术参数 Technical parameters:

检测标准 Inspect	贴标不良(冲标、歪标、斜标、错位、气泡、褶皱)、黑点、杂质、缺口、飞边、孔洞、变形等 Poor labeling (punching, crooked, oblique, dislocation, bubbles, wrinkles) black spots, impurities, gaps, flash, holes, deformation, etc.		
检测区域 Detection area	杯身各部标签、杯口、杯内壁、杯外底 Labels on the cup body, cup mouth, cup inner wall, cup outer bottom		
电压电流 Voltage and current	适配客户国家标准 Adapt to national standard		
压缩空气 Compressed air	0.5Mpa-0.8Mpa		
检测速度 Speed	300个/分钟 300pcs/min	功率 Power	3000-6000w
检测精度 Precision	0.1mm	准确率 Accuracy	99.9%
设备尺寸 Size	1277*670*1634mm	重量 Weight	260kg





## 售后服务

After-sale Service



### 快速响应

Quick Response

7x24小时服务, 快速响应, 处理客户需求

7x24 hours service, quick response to deal with customer needs



### 远程支持

Remote Support

远程解决问题, 高效便捷处理各种突发情况

Solve problems remotely and handle various emergencies efficiently and conveniently



### 跟踪服务

Tracking Service

设备出厂后, 持续沟通跟进, 及时反馈设备运行状态

After the equipment leaves the factory, continue to communicate and follow up, and timely feedback the operating status of the equipment



## 现场应用

Field Application



合作伙伴  
Partners

# KEYE TECH



期待您的加入.....